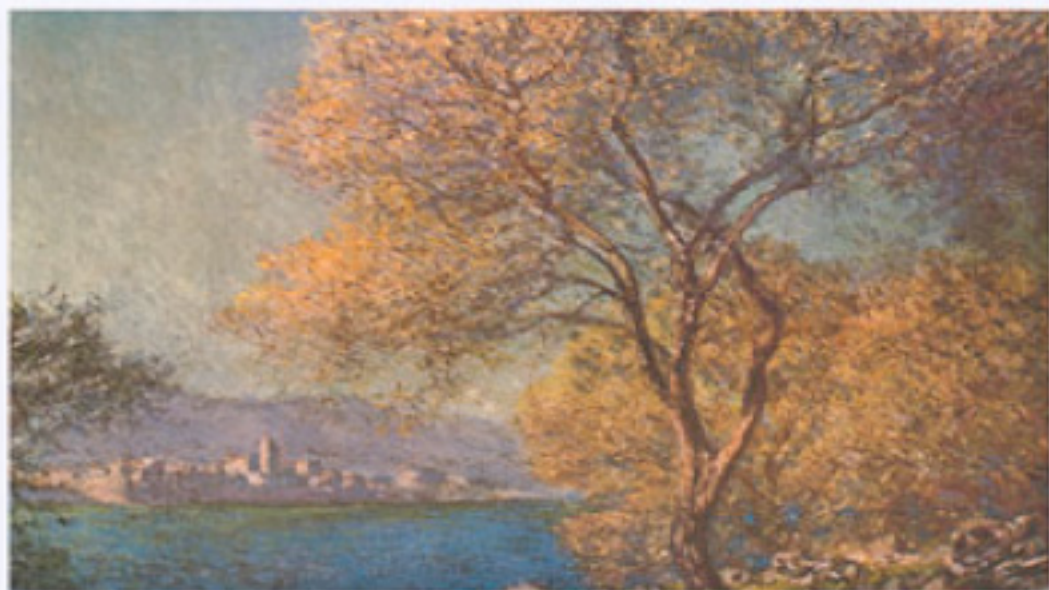




Sattvic Environments are lovely, beautiful.



Care for it with discernment.

Where is your consciousness being placed?

I am speaking of your inner and outer environment.

Tendencies. Actions. Inclinations.

The ancient teachers classified this into three areas.

The first, Tamas, is the consciousness of primarily body consciousness, bodily desires.

The mere physical. It is based on an inertia.

A denseness. The second is Rajas. This is an active nature. Often

The Self in you is the same Self in others

consciousness of Sattva, in word, thought and deed.

Q: Robert, what if I have a tough job with others, and family, and responsibilities? What is my consciousness there?

A: That is even better.

You can emanate the Consciousness of love to everyone, yet remain unattached to the results. You see, when you emanate a certain Consciousness of the Self, without false pretense, it attracts the Self in others. The Self likens to the Self.

That is why I say, what you are speaking so loudly I can't hear a word you are saying. The Self in you is the same Self in others.

It is the same. There is no difference. Everyone is created in the Omniscient Love that emanates as the Self.

This world is inhabited by a mesmerized humanity. We are dreaming that we are physical beings defined by outer circumstances.

productive.

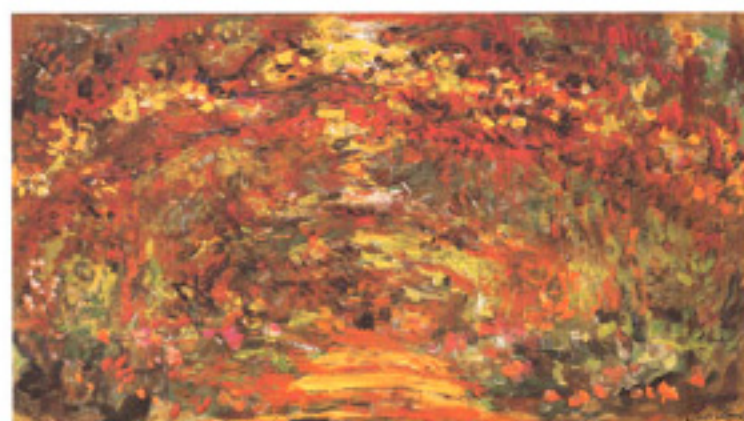
The third is Sattva. Things of purity, beauty, spirituality. These are what one would call Sattvic people. It is good to examine all areas of your life. Then you can identify what is influencing you.

I am sure we all know people in all of these categories. Now when you are committed to spiritually progressing, you will want to create a life and environment that is primarily sattvic in nature.

Vegetarian food, pure living, pure hearted people. Some people confuse the outer with the inner life. That is to say, you can have all of these outer things, all appearing pure, (Sattvic), yet your thoughts and actions are impure. This is like the churchgoer who is an entirely different person on Sunday than he is the rest of the week.

The most important thing is that you are pure inside. It is just that it is easier to live this way when you create an environment of this consciousness.

A Consciousness that emanates the con-



Therefore, if you are rooted in the Self, in the consciousness of the Self, you do not say, "I am too old, it is too late for me, I am stressed, I am no good, etc."

You say, "I am the eternal Self, ever new.